



## 12 Macleay Court HARRINGTON PARK NSW

4 2 2

Welcome to the epitome of luxury living in sought after Harrington Park. This magnificent property offers a rare opportunity to embrace comfort, style, and convenience all in one.

Prepare to be amazed by the splendour of the master bedroom, which offers an abundance of space for relaxation and personal indulgence. Complete with monster walk-in robe and ensuite, this property offers comfort and luxury at every step.

Comprising of a further 3 good-size bedrooms (all with BIR's), open plan kitchen, meals and living, formal dining and 2 more living areas, this home boasts space for any family and their guests.

Convenience is at your fingertips. Nestled in the desirable

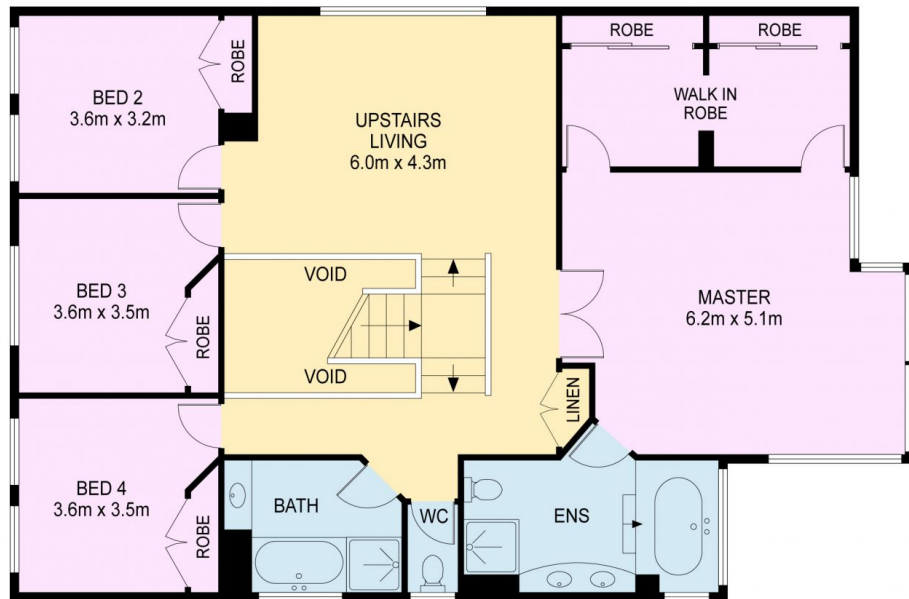
**Land Size** : 606 sqm  
**View** : <https://www.macarthurunited.com.au/8025443>



**Jake Alchin**  
0438 228 722



**Ryan Shumack**  
0426 984 815



**FIRST FLOOR**



**GROUND FLOOR**

## 12 MACLEAY COURT, HARRINGTON PARK

Disclaimer: This Floor plan and/or site plan is an approximation for illustration purposes only.  
All measurements are approximate and not guaranteed to be exact or to scale  
Interested parties should confirm measurements by their own means



Internal Area: 332 sqm

SCALE

